



Welcome to the
**Erin Wastewater System
Public Information Centre**

7:00 PM to 9:00 PM



Purpose of the Public Information Centre



This Public Information Centre has been coordinated to provide local residents with information pertaining to upcoming **construction activities**.

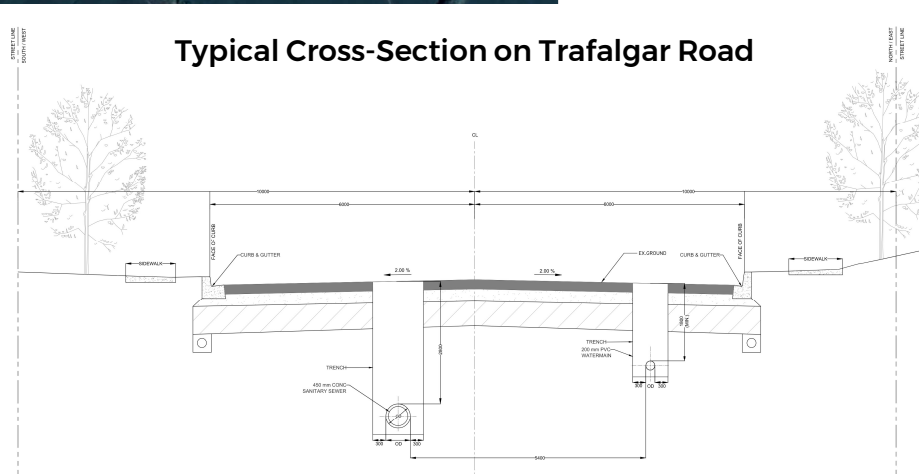
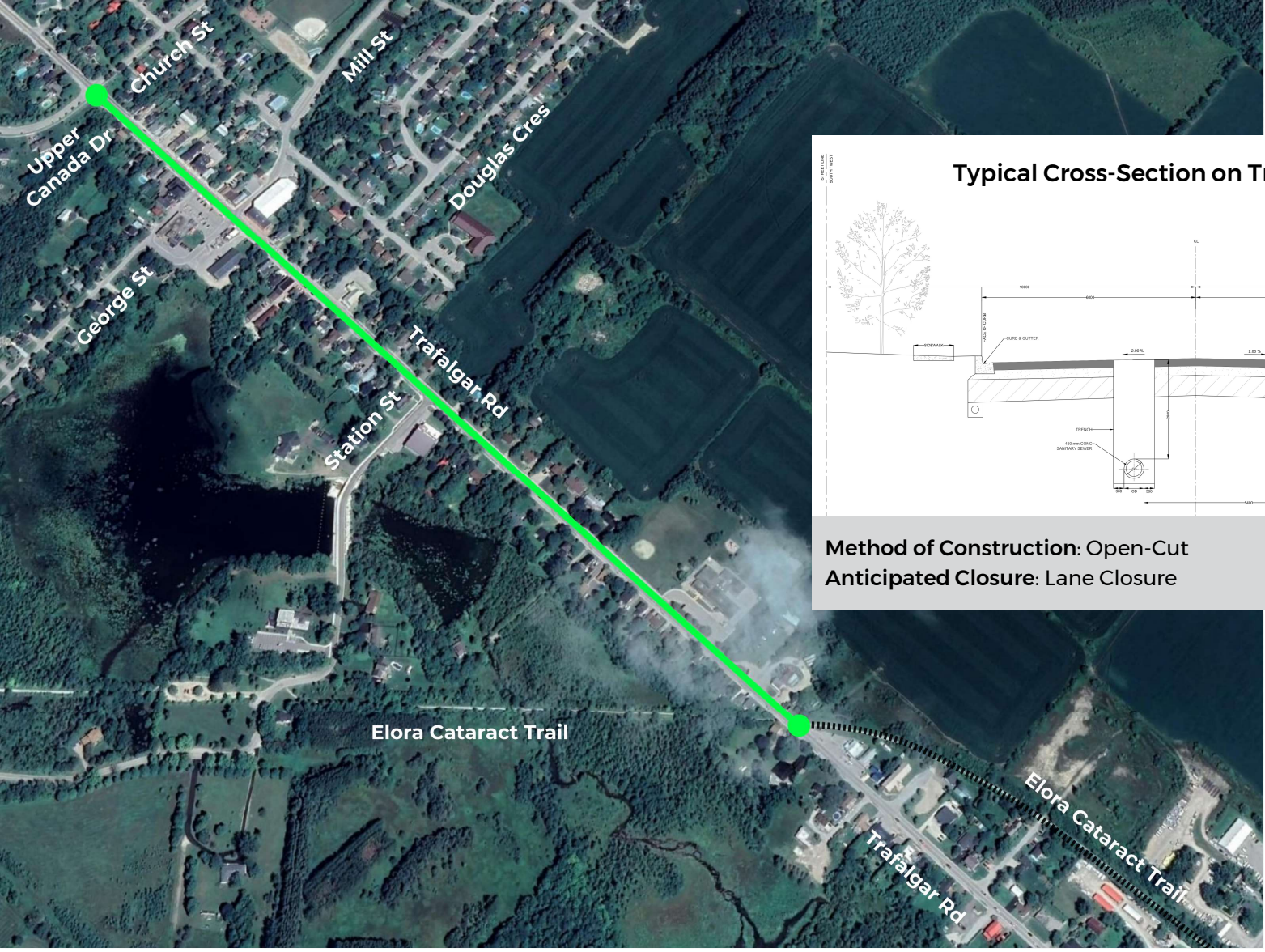
Our team members are wearing name tags, please approach them to ask questions.

If you're with the media, **please acknowledge yourself** at sign-in so we can provide you with a media identification tag.

Wastewater System Plan Overview

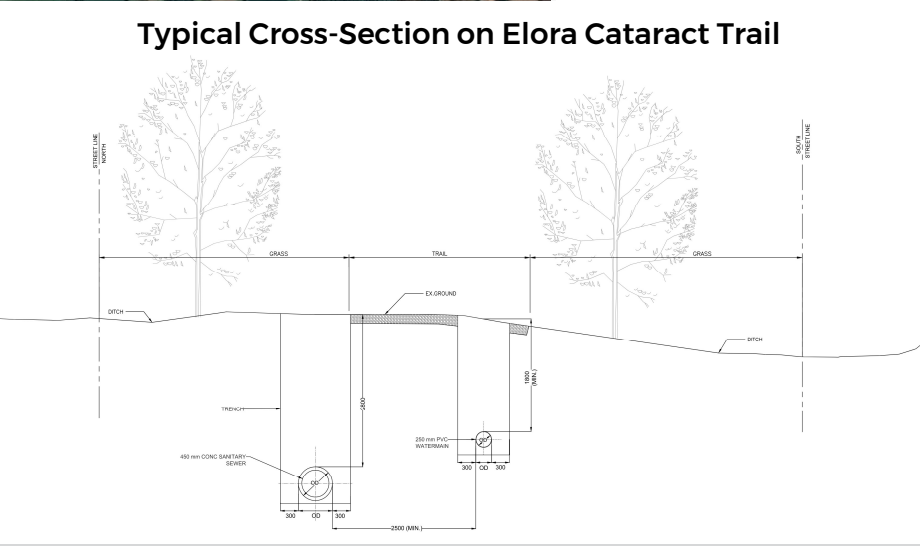
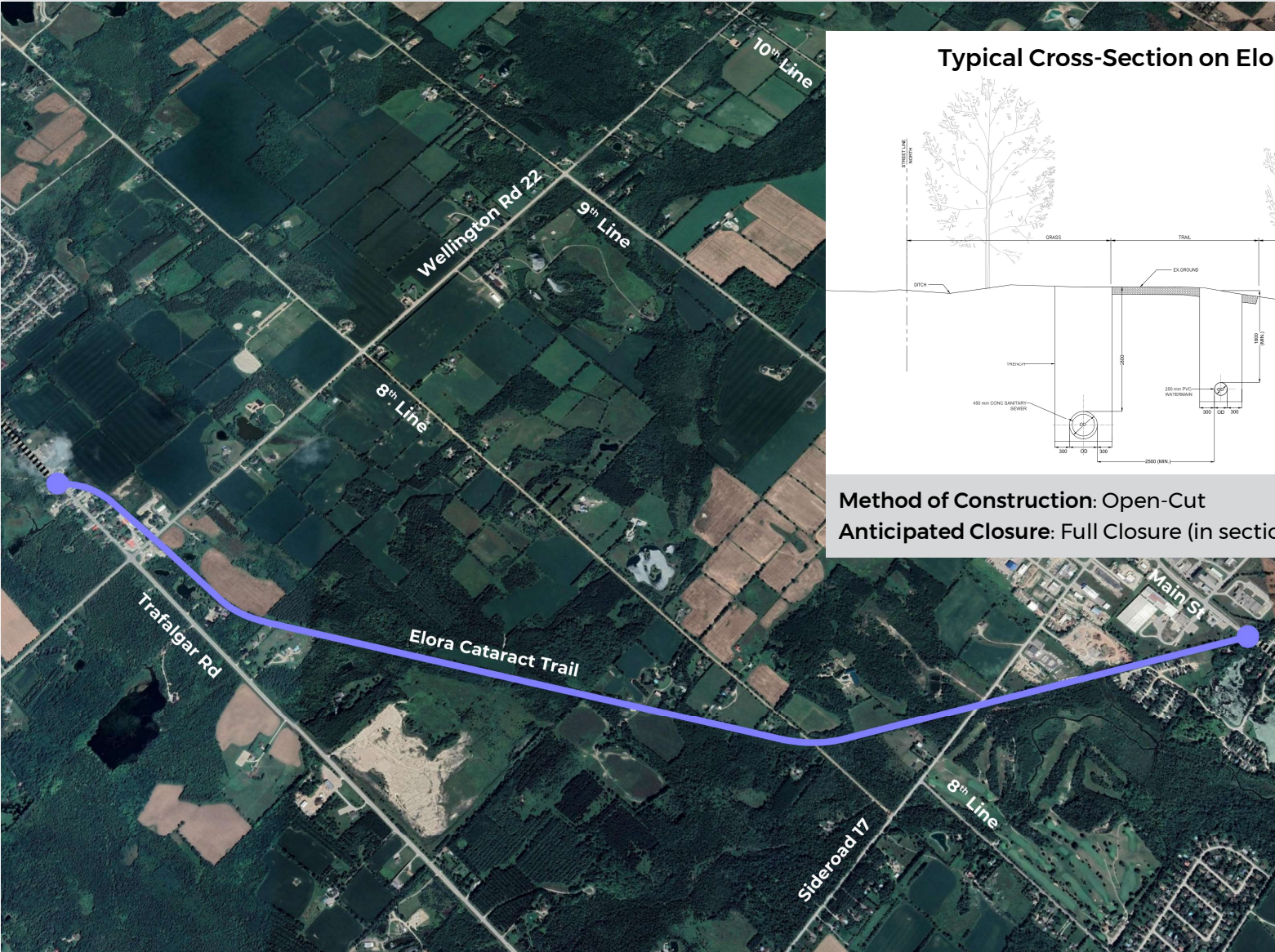


Hillsburgh Gravity Sewer



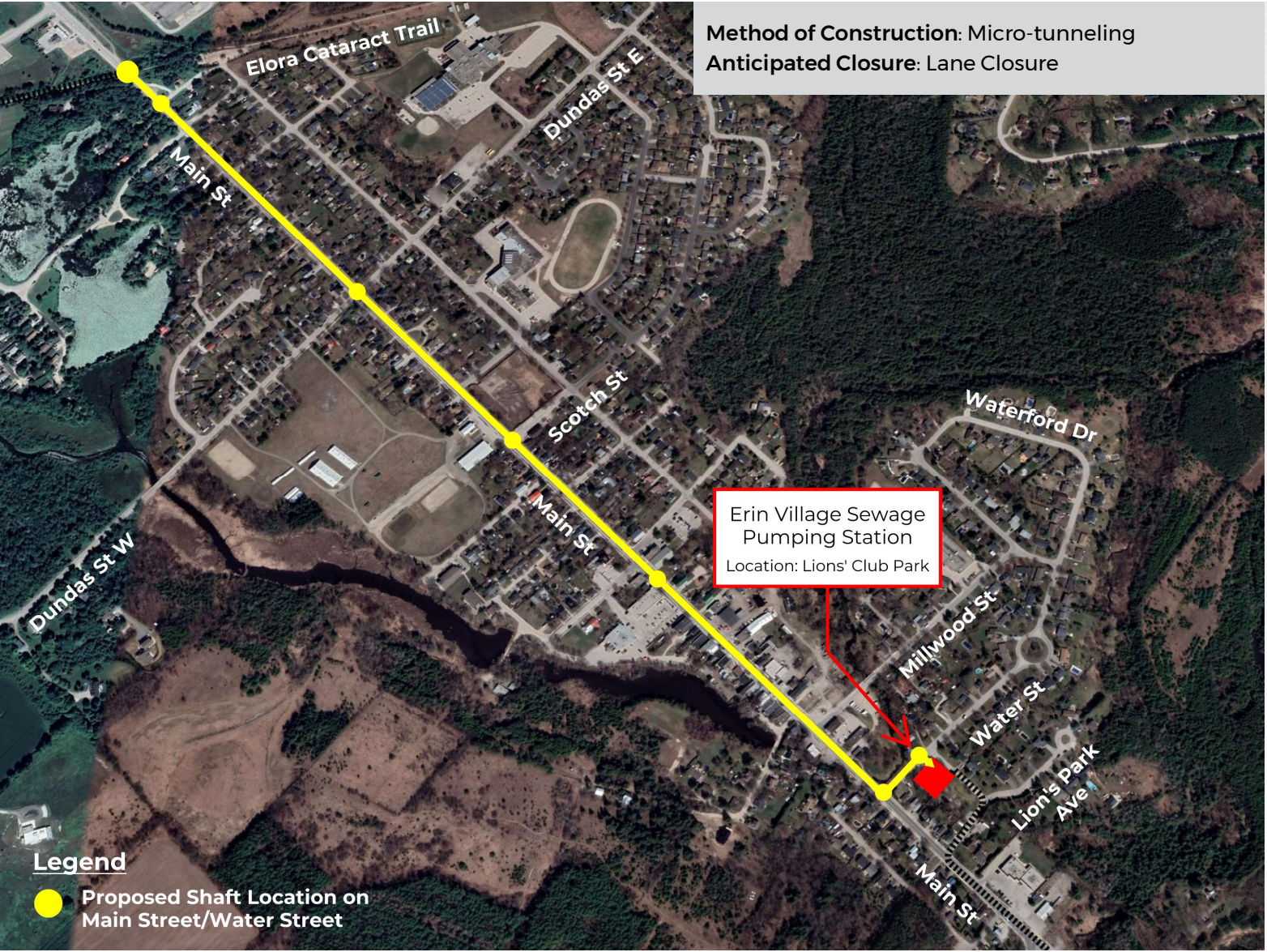
Method of Construction: Open-Cut
 Anticipated Closure: Lane Closure

Elora Cataract Trail Gravity Sewer



Method of Construction: Open-Cut
Anticipated Closure: Full Closure (in sections)

Erin Village Gravity Sewer



Erin Village Sewage Pumping Station Plan View – Lions' Club Park



7

Want to know more? Check out our fly-by, aerial-perspective video of the sewage pumping station. Please ask one of our team members to direct you to the appropriate TV/video station, if unsure.

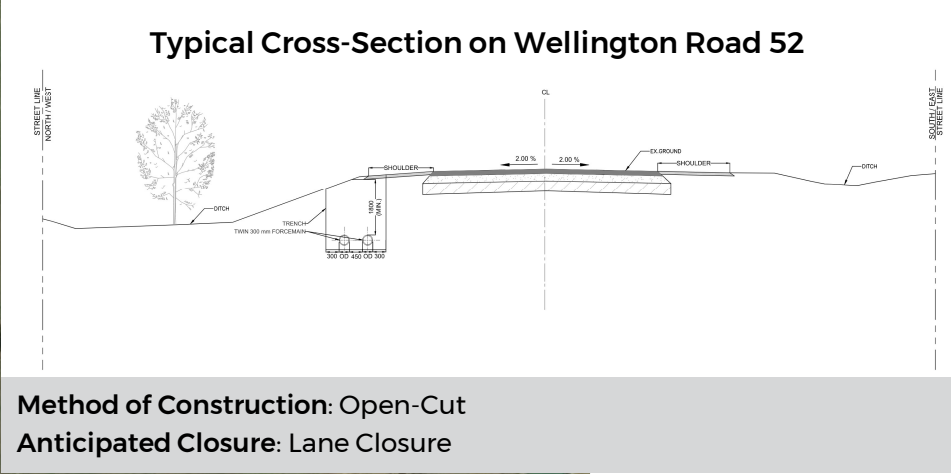
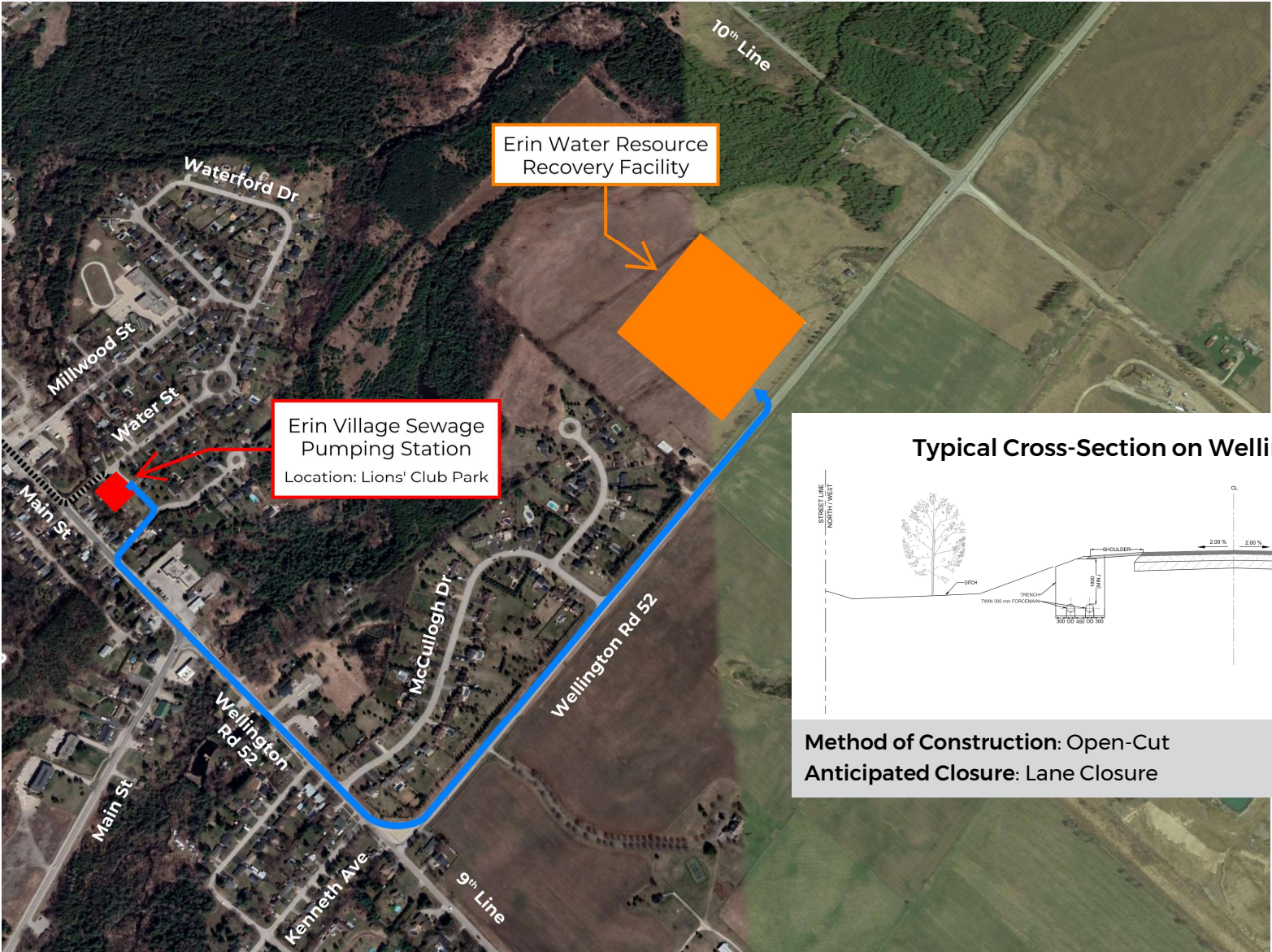
Erin Village Sewage Pumping Station

3D Conceptual View – Lions' Club Park



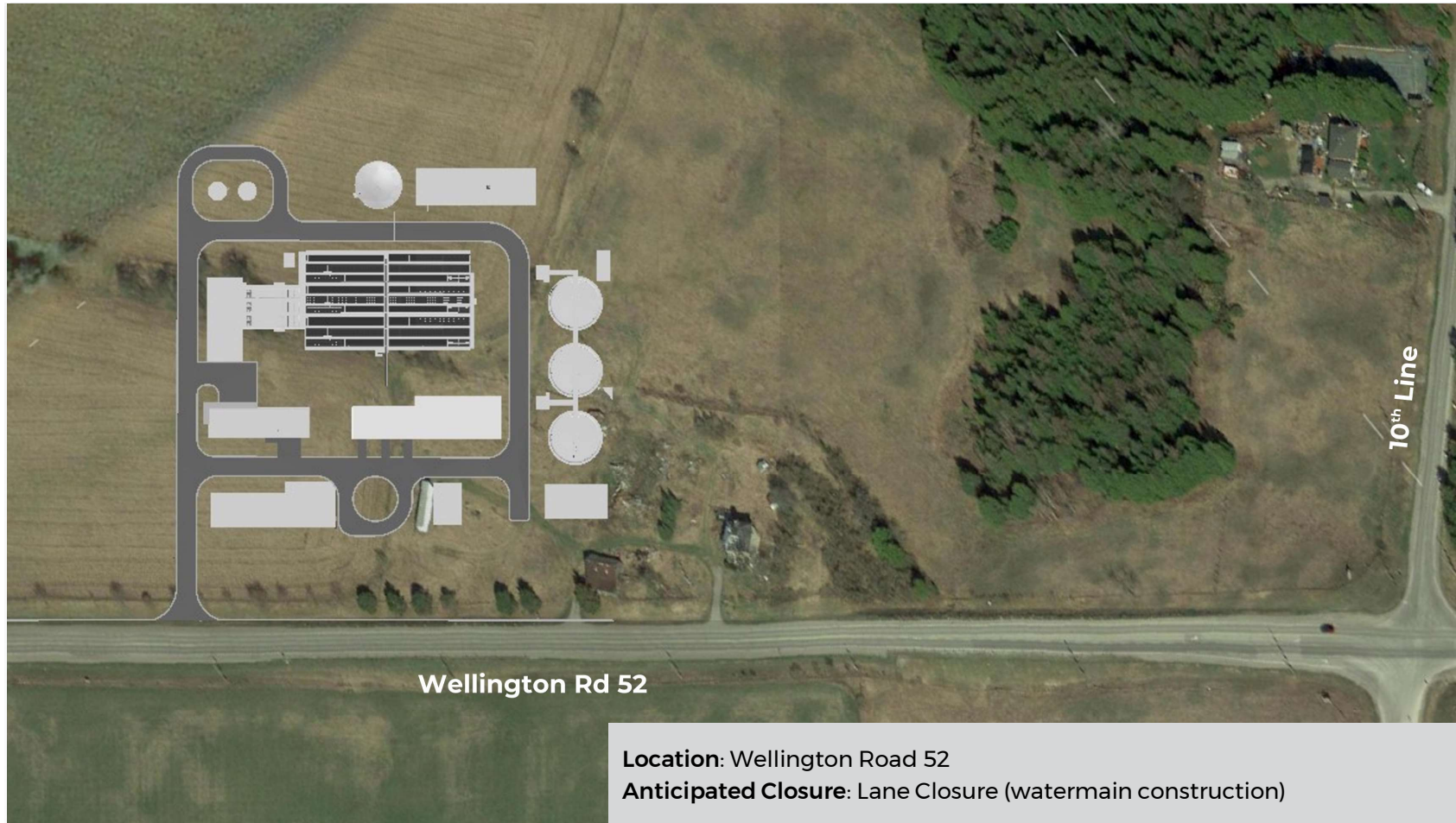
View of Erin Village Sewage Pumping Station from Water Street

Erin Village Twin Forcemains



Erin Water Resource Recovery Facility

Plan View



10 **Want to know more?** Check out our fly-by, aerial-perspective video of the facility. Please ask one of our team members to direct you to the appropriate TV/video station, if unsure.

Trenchless Pipe Installation

Micro-tunneling Method

- Micro-tunneling is a trenchless tunnel construction method that is widely used for the installation of sewer, water and gas pipelines, and telecommunications cables.
- Micro-tunnel boring machines use laser-guided remote control and therefore best suited for pipelines that require precise grades, such as gravity sewers.
- Micro-tunneling involves constructing shafts and tunneling from shaft to shaft. The shafts are constructed without open excavation.
- In comparison to the traditional open-cut pipe installation method, micro-tunneling is **less disruptive** in nature and has a **lower carbon footprint**.

Want to know more? Check out our short video on how micro-tunneling shafts are constructed.

If the TV/video station is not immediately visible, please ask one of our team members to direct you to the appropriate area.



Mitigation of Environmental Impacts from Construction Activities

Environmental considerations related to construction activities have been at the forefront of attention throughout the project planning phase.

Sustainable planning and conservation have been embedded into the design of the Erin Wastewater System project.



Tree Protection Plan

Preserve and protect healthy trees where possible, and offset impacts by planting multiple trees for each tree removed.



Trail Restoration

Following pipe installation, the Elora Cataract Trail will be restored to its original condition or better.



Erosion and Sediment Controls

Multi-barrier approach employing various controls to protect natural features from erosion and/or sediment accumulation.



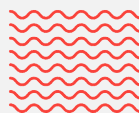
Trenchless Pipe Installation

Less disturbance to the surrounding environment and lower carbon footprint than traditional open-cut installation.



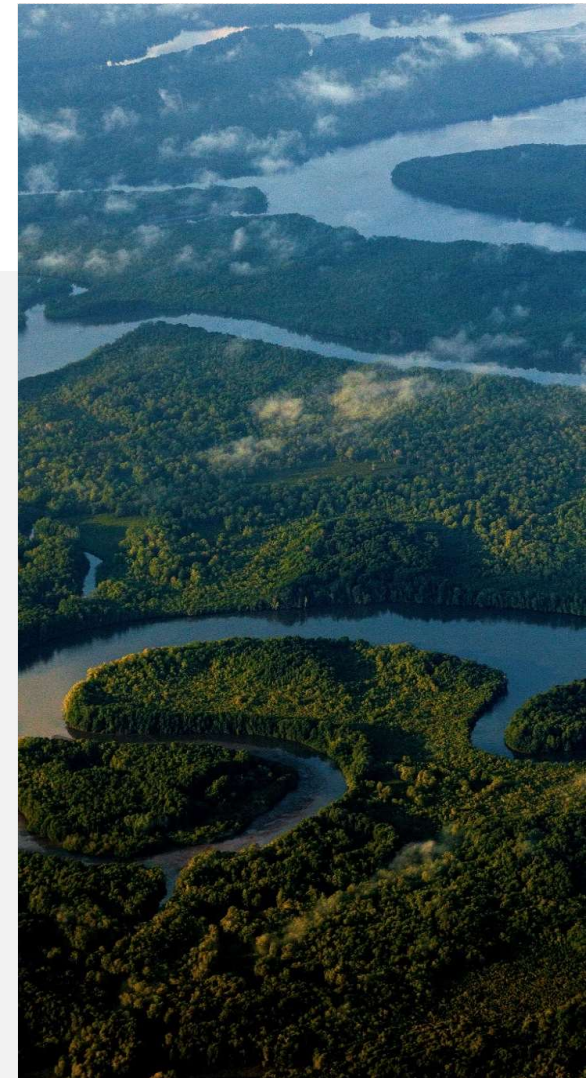
Recycled Construction Materials

Existing native materials such as soil will be used during the restoration phase of construction works.



Limited In-Water Work

When possible, trenchless pipe installation will be applied at creek crossings to reduce or eliminate the need for in-water work.



Anticipated Community Impacts due to Construction Activities

Various measures will be implemented to limit the impact of disruptions caused by construction activities on the community.

- 1 Routine road cleaning to minimize dust and air emissions
- 2 Construction activities will be planned in accordance with noise bylaw requirements
- 3 Required closures will be planned to minimize disruptions to traffic flow and recreational activities

The closures proposed below are anticipated based on current construction plans but may be subject to change.



Lane Closures

- Main Street, Erin Village
- Wellington Road 52, Erin Village
- Trafalgar Road, Hillsburgh



Full Closures

- Elora Cataract Trail (in sections)

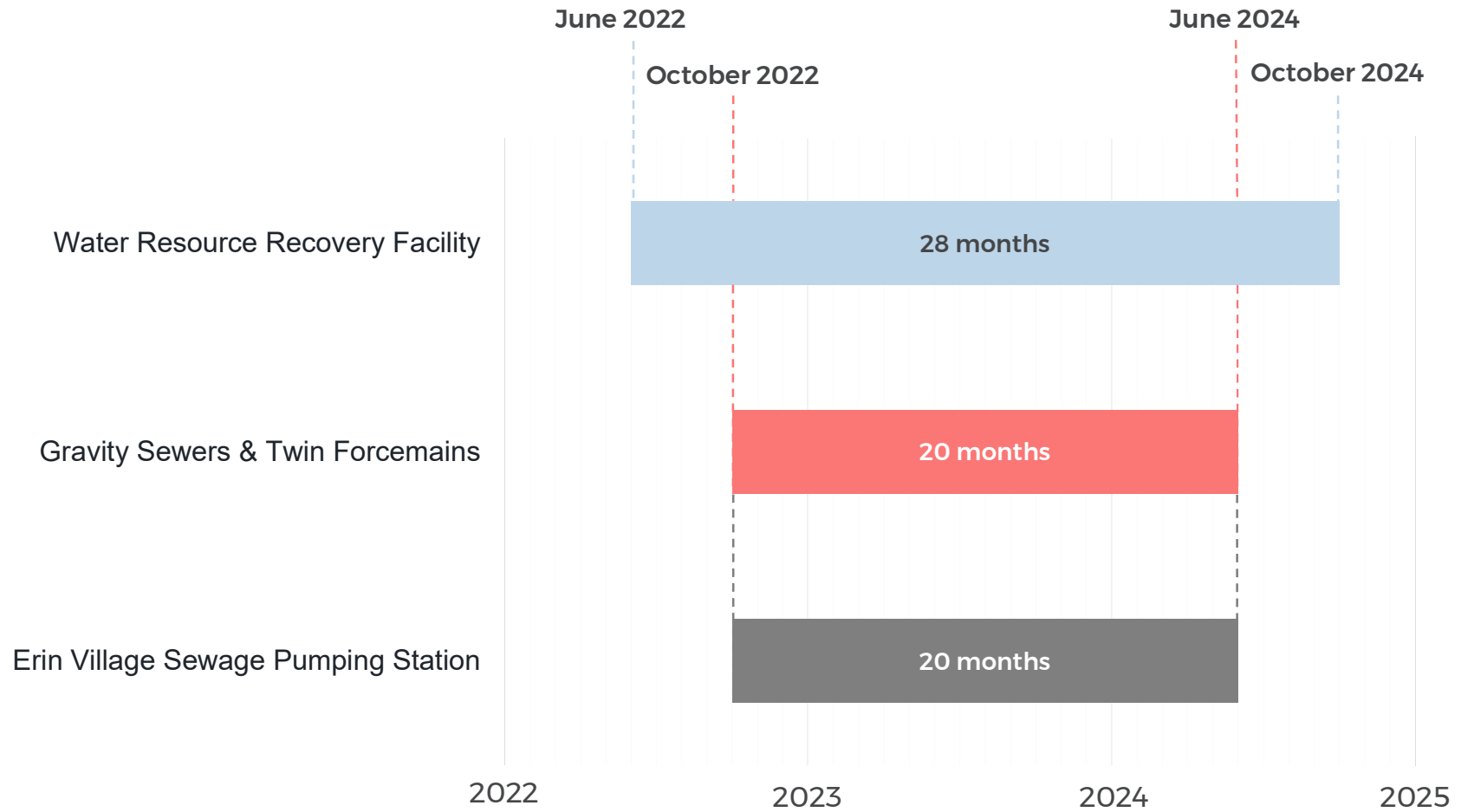


Restricted Access

- Lions' Club Park, Erin Village



Construction Schedule





Thank you for attending

If you have additional questions, please contact us at:



communications@erin.ca



(519) 855-4407



erin.ca

TOWN  OF
ERIN