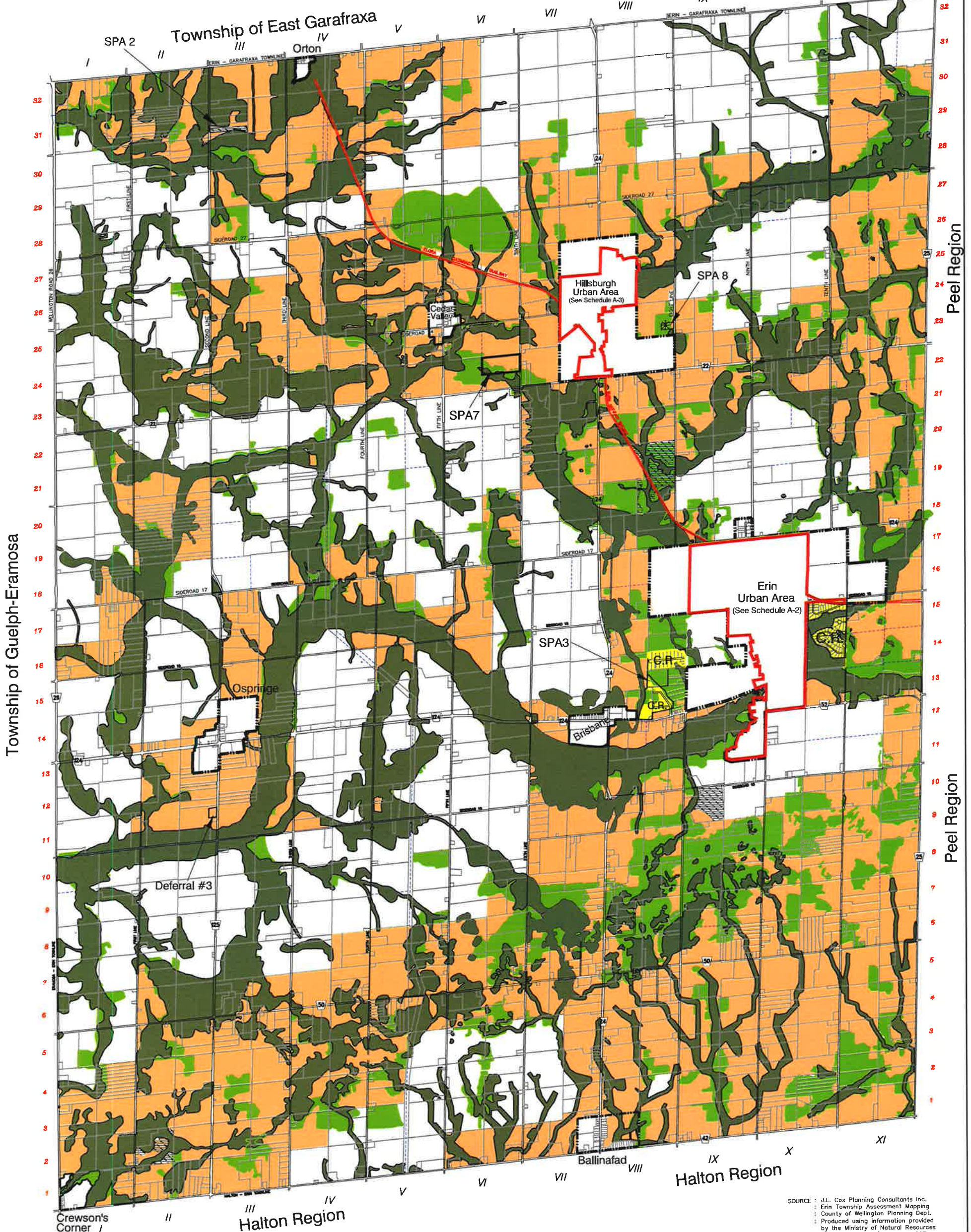
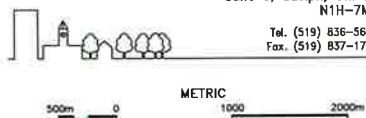


Town of Erin Official Plan

MODIFIED SCHEDULE A-1



J.L. Cox Planning Consultants Inc.
 Urban And Rural Planning Services
 350 Speedvale Avenue West
 Suite 6, Guelph, Ontario
 N1H-7M7
 Tel. (519) 836-5622
 Fax. (519) 837-1781



- Prime Agricultural
- Secondary Agricultural
- Core Greenlands
- Greenlands
- Recreational
- * Former Landfill Site
- C.R. Country Residential
- Built Boundary

SOURCE : J.L. Cox Planning Consultants Inc.
 Erin Township Assessment Mapping
 County of Wellington Planning Dept.
 Produced using information provided
 by the Ministry of Natural Resources
 Copyright © Queen's Printer, 1997.
 Grand River Conservation Authority and
 Credit Valley Conservation Authority

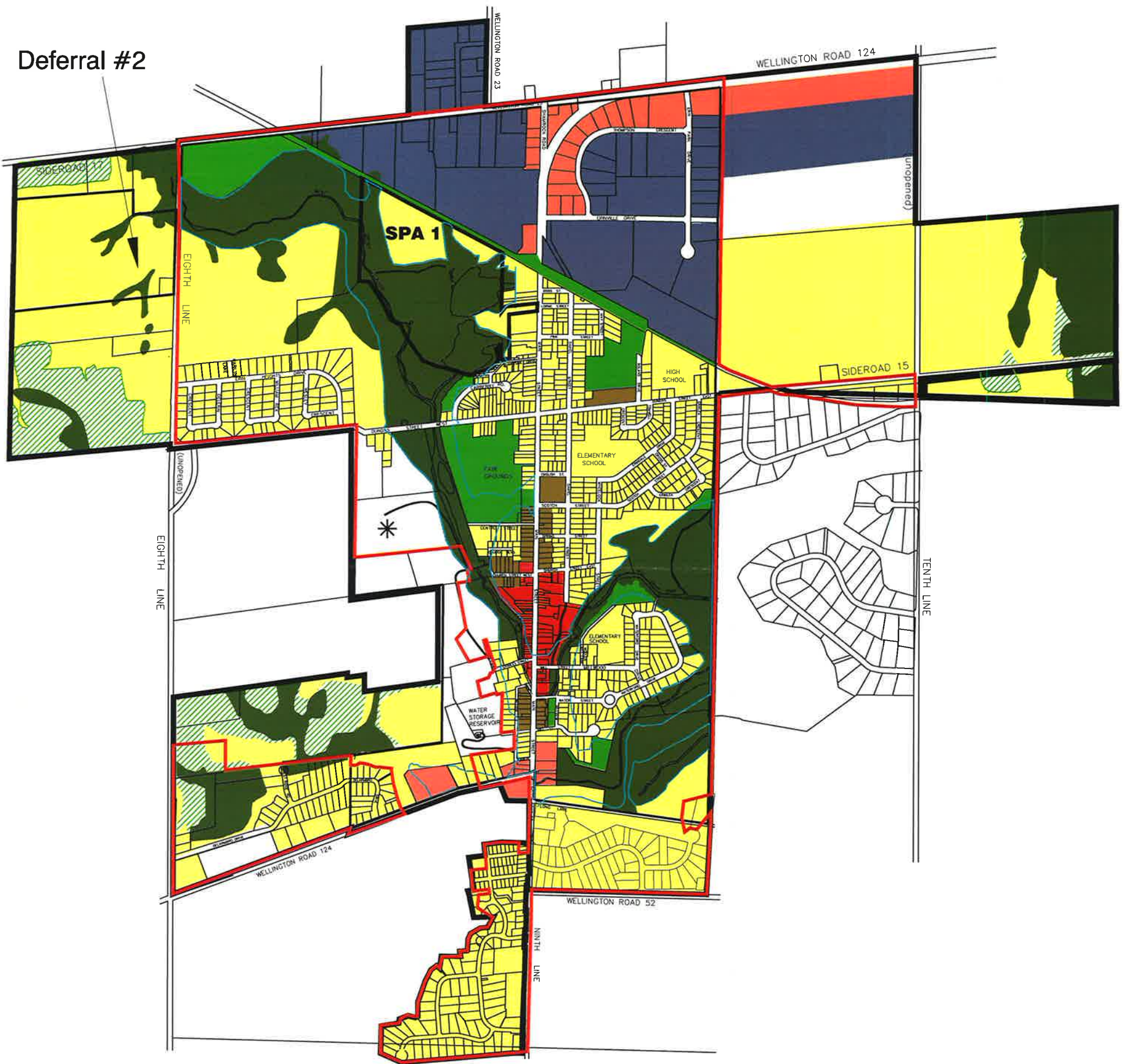
NOTE:
 The rural portion of the Town of Erin is also subject to the following
 designations in the County of Wellington Official Plan: Earth Science
 Provincial ASZ, Mineral Aggregate Area, Everton Water Management
 Protection Area.

MODIFIED: August 26, 2011
 Schedule A-1 - Amended Town of Erin CP.dwg

Schedule A-2

MODIFIED SCHEDULE A-2

Deferral #2



Legend:

- | | |
|-------------------------------|------------------------------|
| - Residential | - Recreational |
| - Central Business District | - Community Improvement Area |
| - Highway Commercial | - Special Policy Areas |
| - Residential Transition Area | - Regulatory Floodline |
| - Industrial | - Future Development |
| - Core Greenlands | - Former Landfill Site |
| - Greenlands | - Built Boundary |

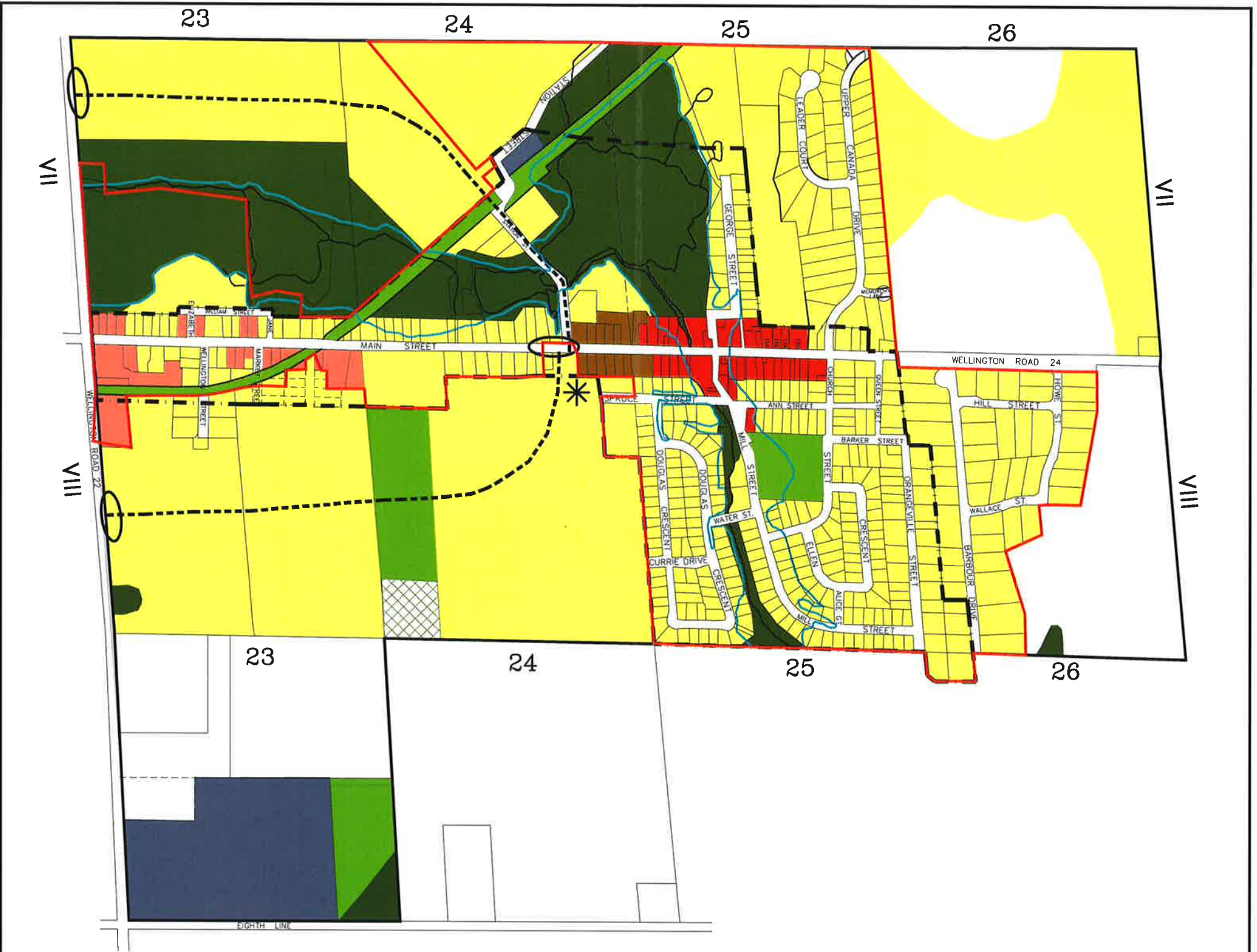
Erin Urban Area Town of Erin Schedule A-2



Scale:
0 100 300 700 metres

Updated: September 13, 2011.

Hillsburgh Urban Area Town of Erin Schedule A-3



- Legend:**
- Residential
 - Central Business District
 - Highway Commercial
 - Residential Transition Area
 - Industrial
 - Core Greenlands
 - Greenlands
 - Recreational
 - Community Improvement Area
 - Regulatory Floodline
 - Proposed Minor Collector
 - Final Alignment to be determined
 - Future Development
 - Proposed New Firehall Location
 - Bulk Boundary



Scale:
 0 200 600 1200
 FEET
 Updated: October 12, 2010.